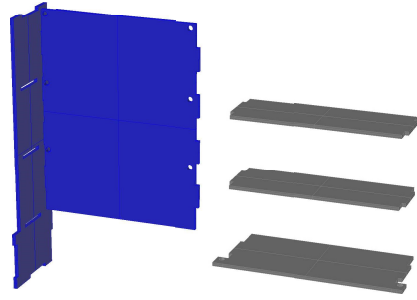
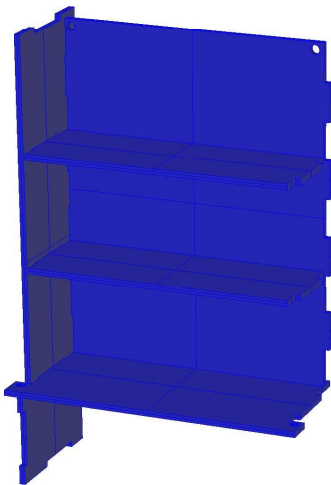


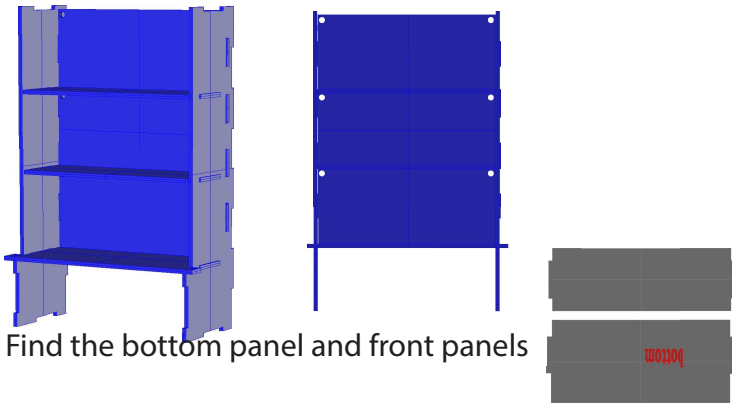
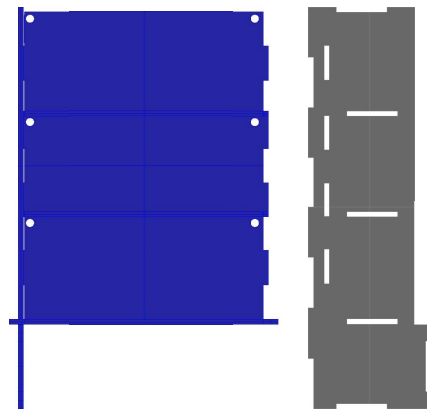
Find the bookcase side panel false rear panel, 2 shelves and bottom shelf with the holes for the doors, now is the time to wallpaper the false rear panel if that is your choice or you can paint it later



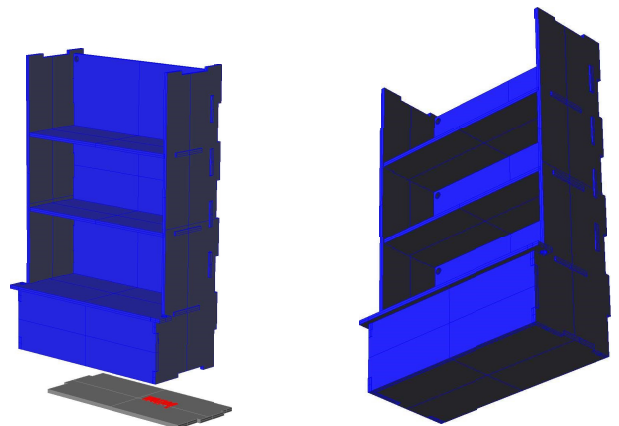
Assemble the false rear panel and side piece



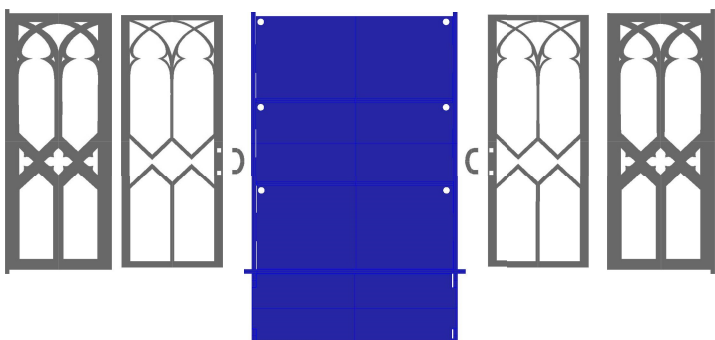
Add the three shelves and the second side panel



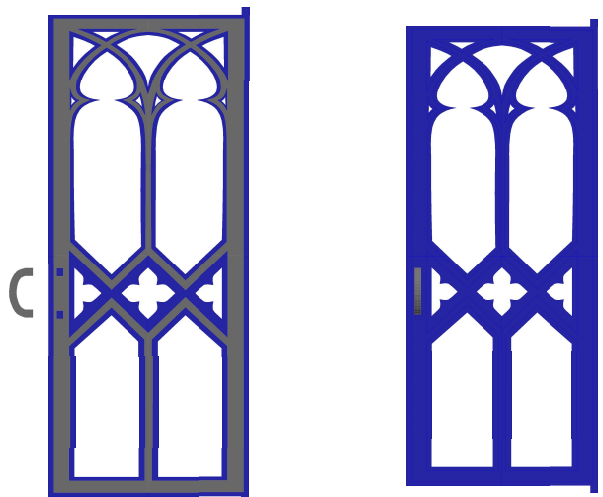
Find the bottom panel and front panels

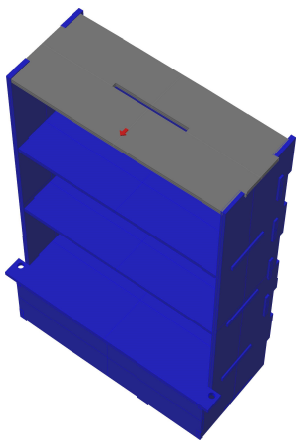


Assemble front and bottom panels

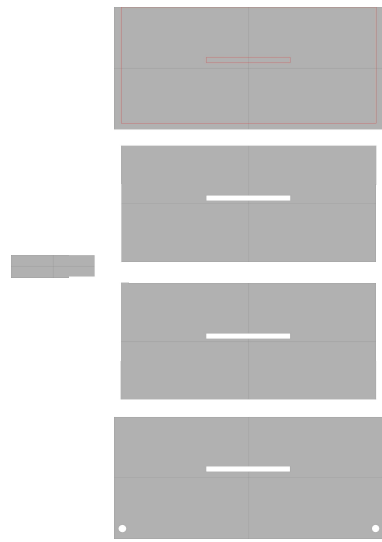


Find the six door pieces and assemble, make sure there is a left and a right door

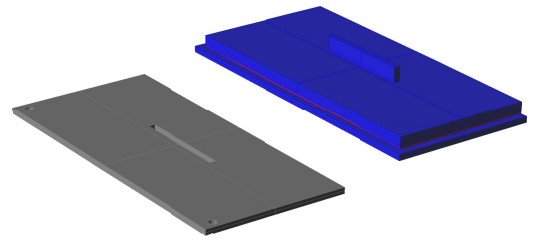




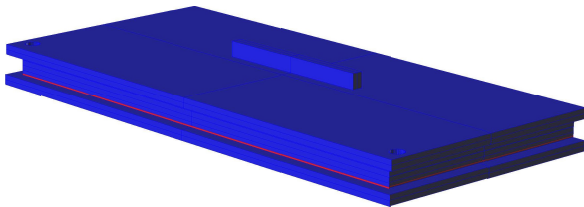
Glue the top panel in place with the arrow pointing forwards, then find the top pieces



glue one of the in between pieces to the top piece making sure it lines up with the marks, glue the alignment tab into the slot (the alignment tab is the larger of the 3 smallest pieces)

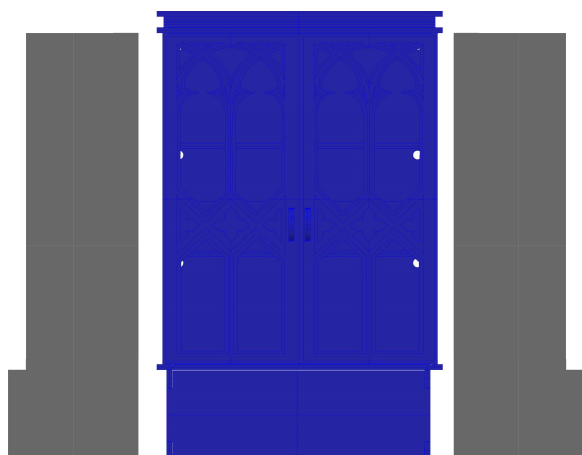


Glue the next piece on

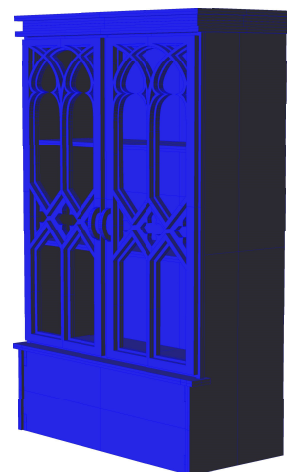


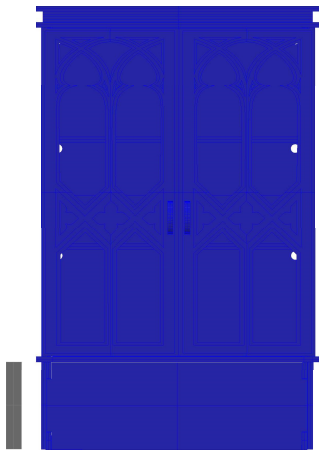
Followed by the last piece with the holes for the door at the front

Flip the completed top over and place the completed doors in the bottom holes, making sure that the doors are in the correct place glue the top to the cabinet

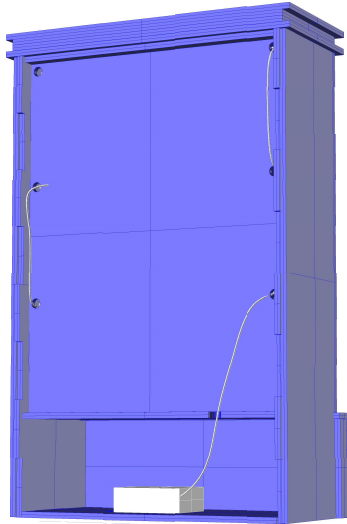
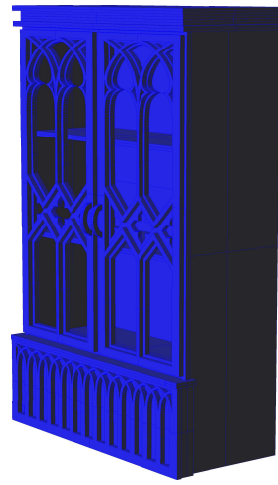


Find and glue the 2 plain pieces to the sides of the cabinet, make sure the doors open



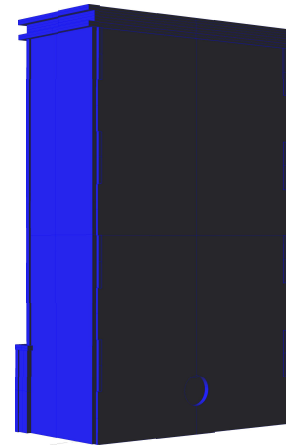
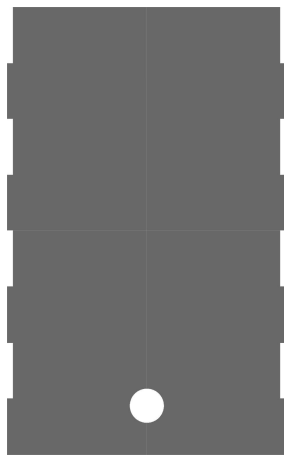
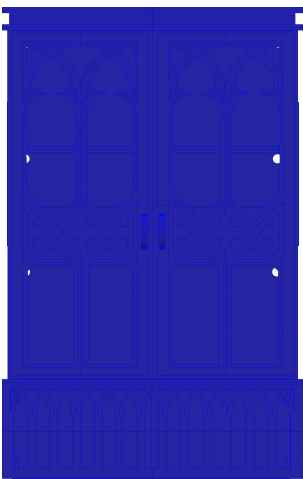
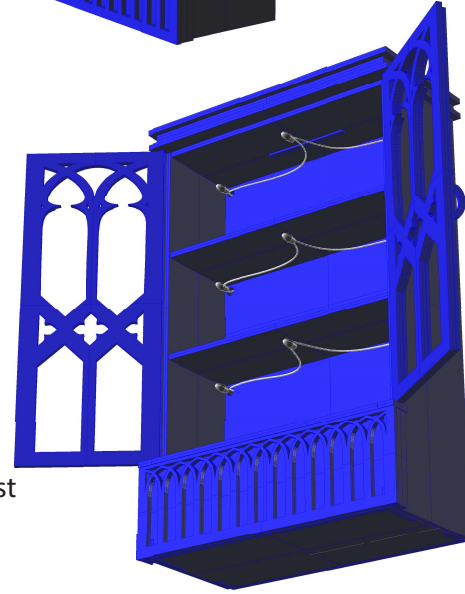


Glue the 3 decoration pieces to the front of the cabinet and the sides making sure its even on both sides



Lighting

Because we painted our cabinet black, we felt it needed extra lights, so starting at the bottom I threaded the lights through the back under the bottom shelf fixed 3 light to the shelf and out through the other side , up to the middle shelf and repeat for the last 2 shelves



The back panel can be glued in place if desired , I left mine unglued so that i can change the battery in the lights when the time comes
your cabinet is now finished , congratulations

The string of lights can be cut where needed. I used 9 lights in my cabinet and cut the string after the 9th light.