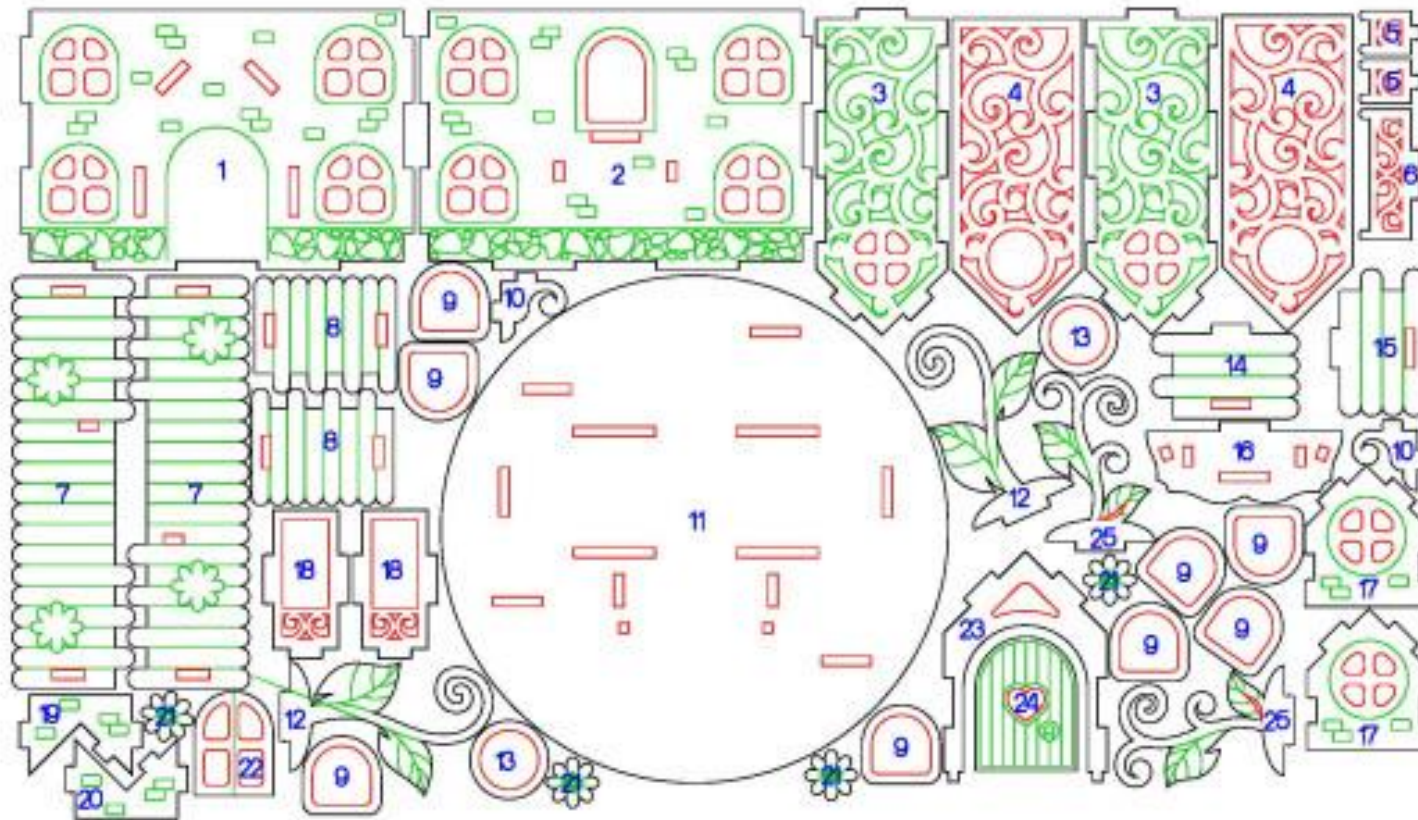


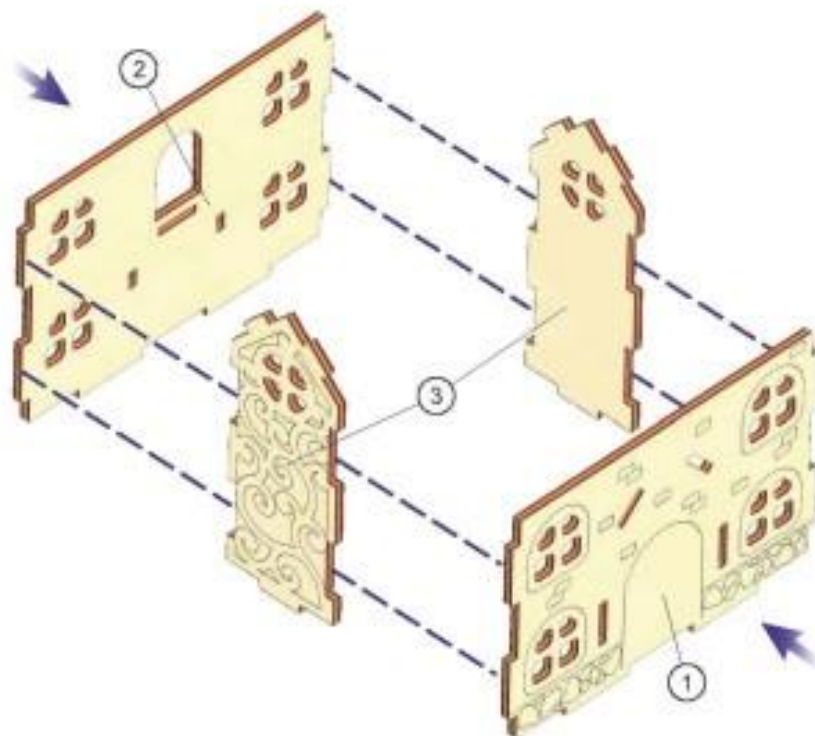
## Miniature Fairy House with Flowers and Plants



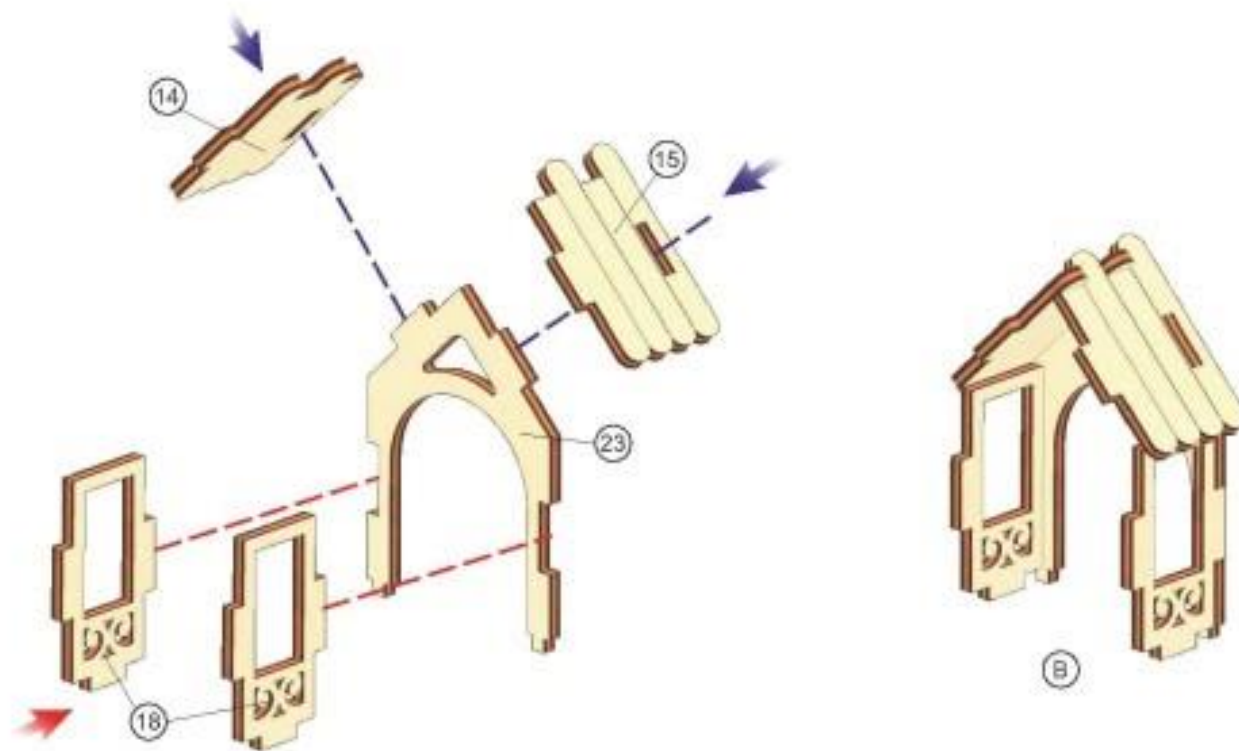
Gather and identify your parts.



Attach part 1 to the two parts labeled 3. Attach part 2 to the other side to create assembly "A".

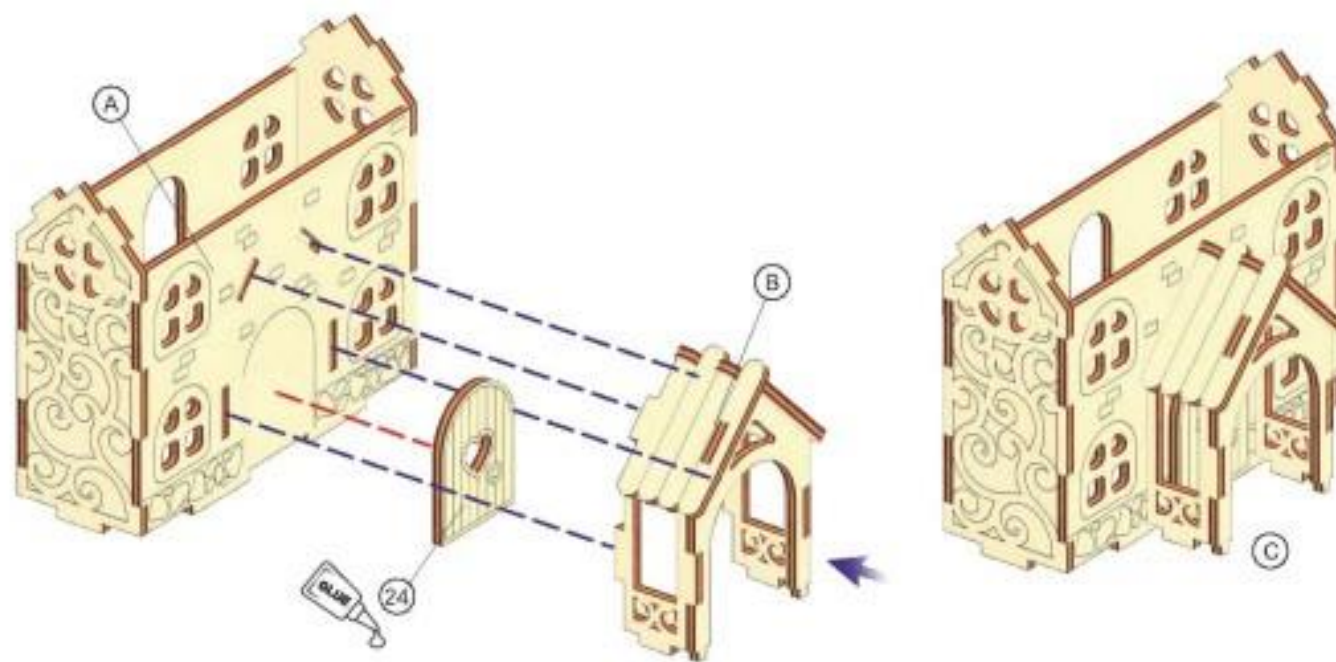


Attach parts 14 and 15 to the top of part 23. Attach both parts labeled 18 to part 23 as shown above to create assembly "B".

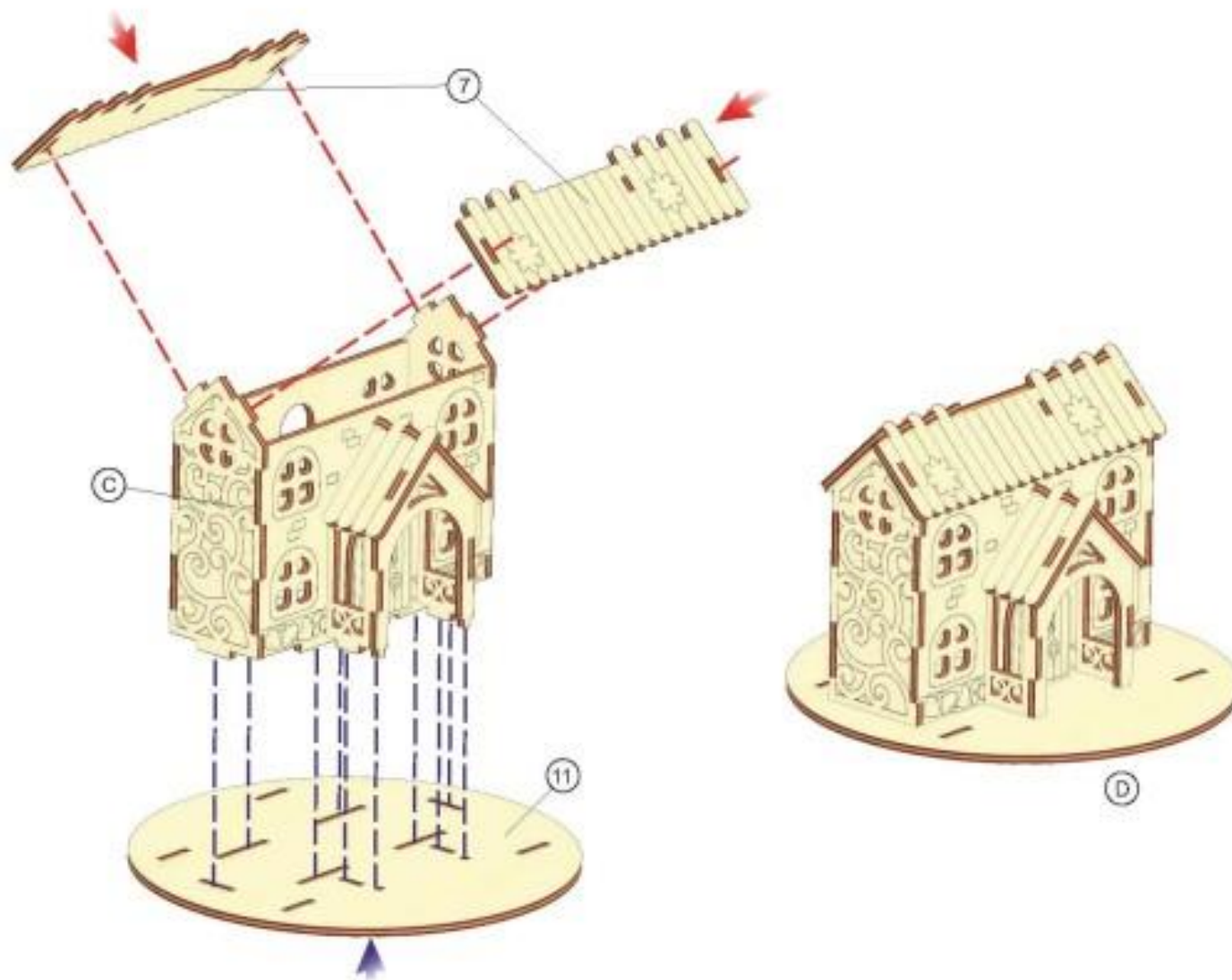




Glue part 24 to the side of assembly A. Use the score lines as a guide for placement. Attach assembly B to the side of assembly A to create assembly "C".



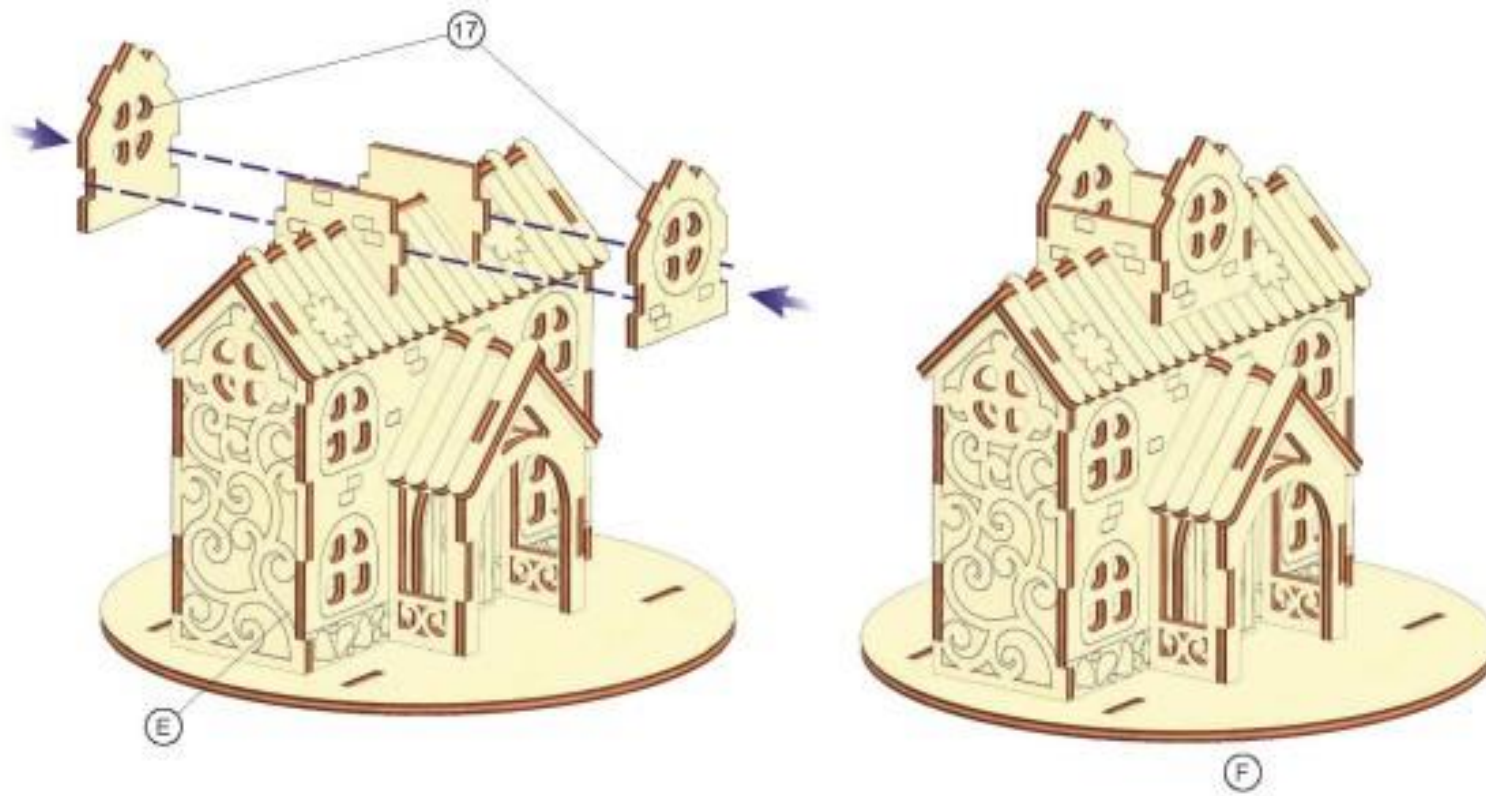
Attach assembly C to the top of part 11. Attach the two parts labeled 7 to the top of assembly C to create assembly "D".



Attach parts 19 and 20 o the top of assembly D.

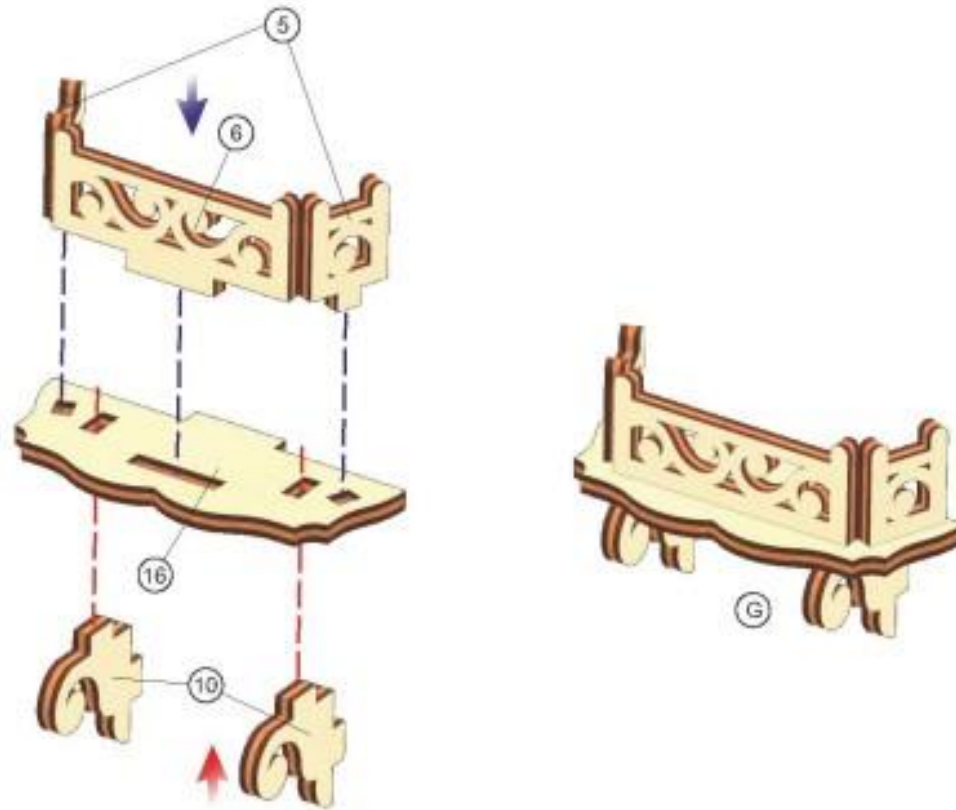


Attach the two parts labeled 17 to the top of the assembly.

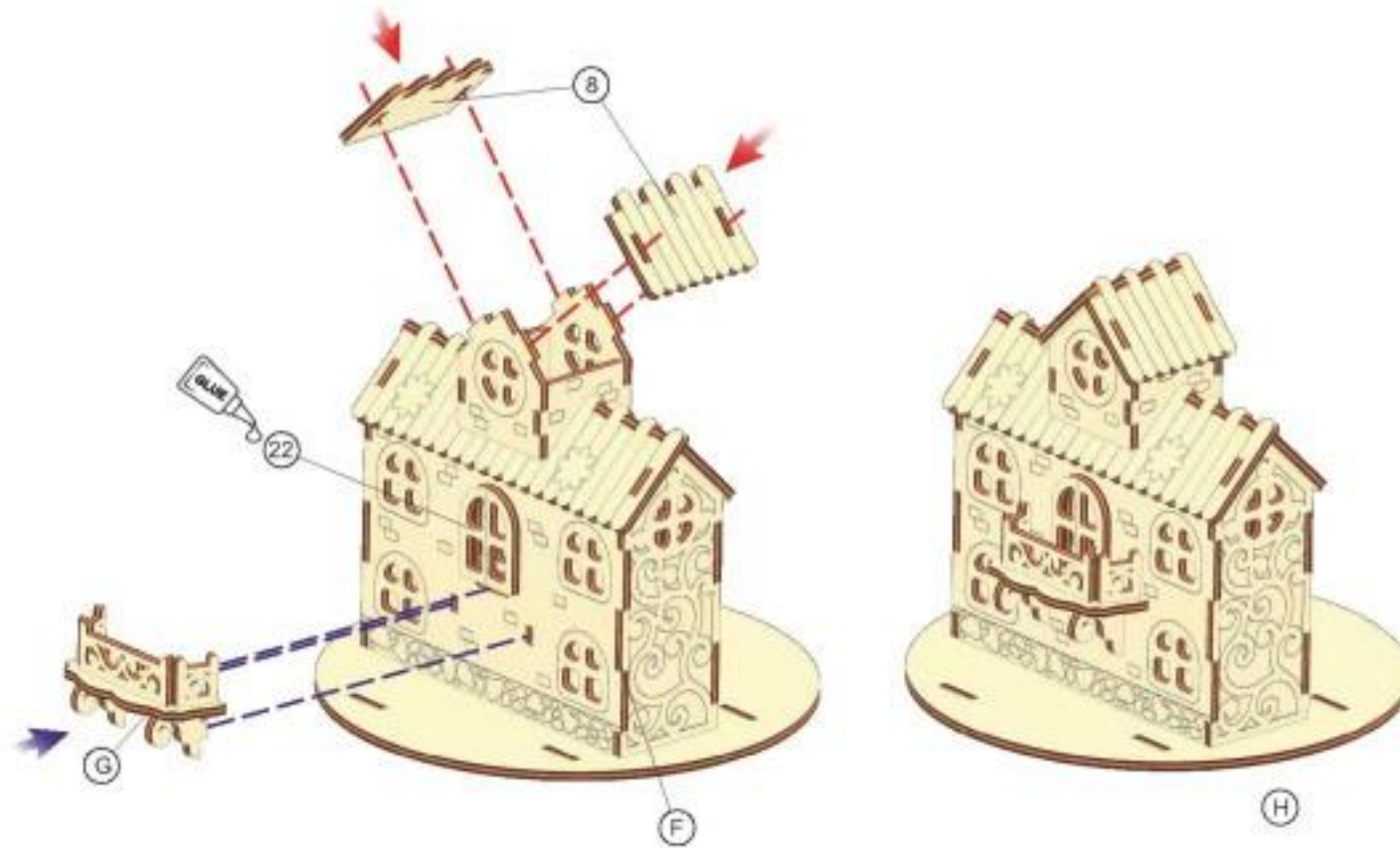




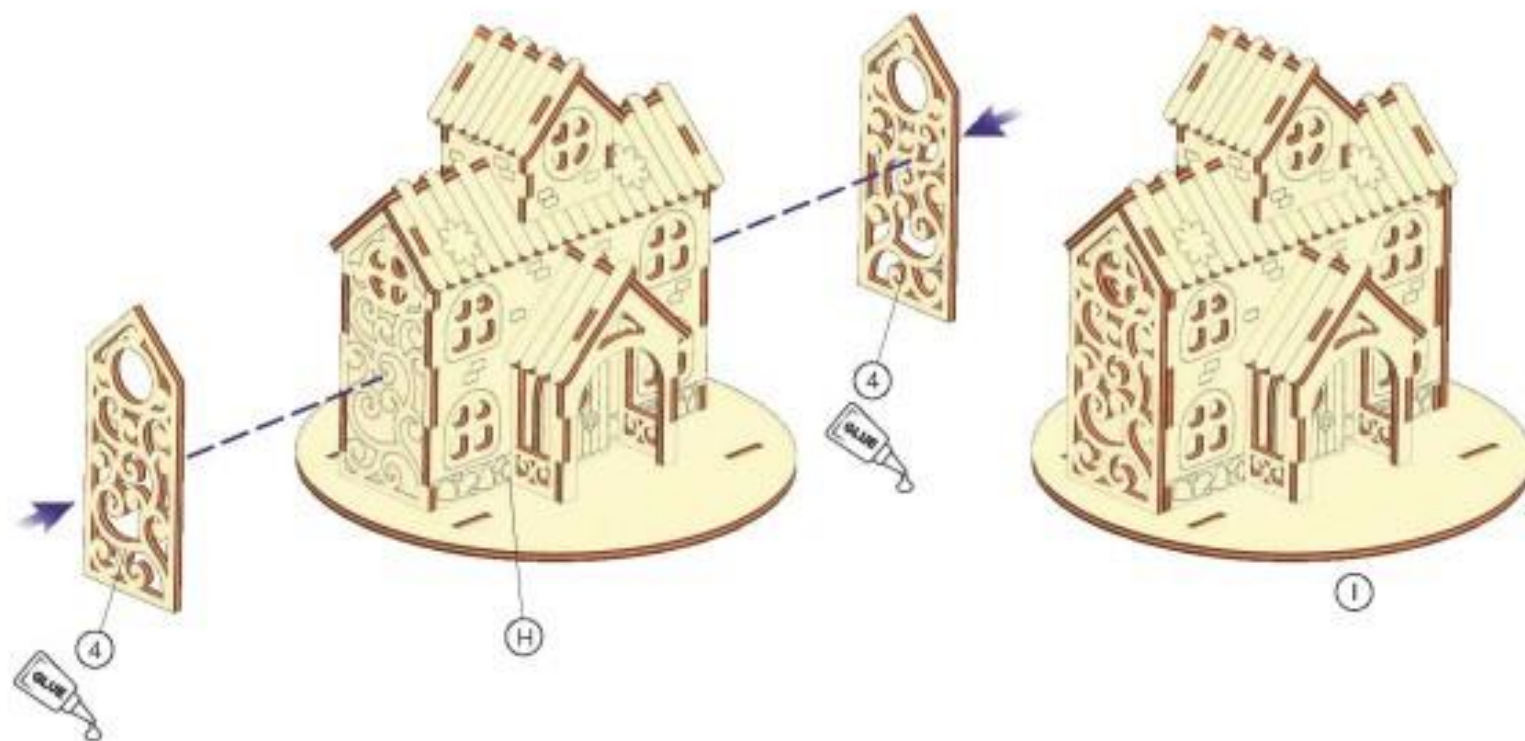
Attach the two parts labeled 10 and attach them to the bottom of part 16. Attach the parts labeled 5 and 6 to the top of part 16 to create assembly "G".



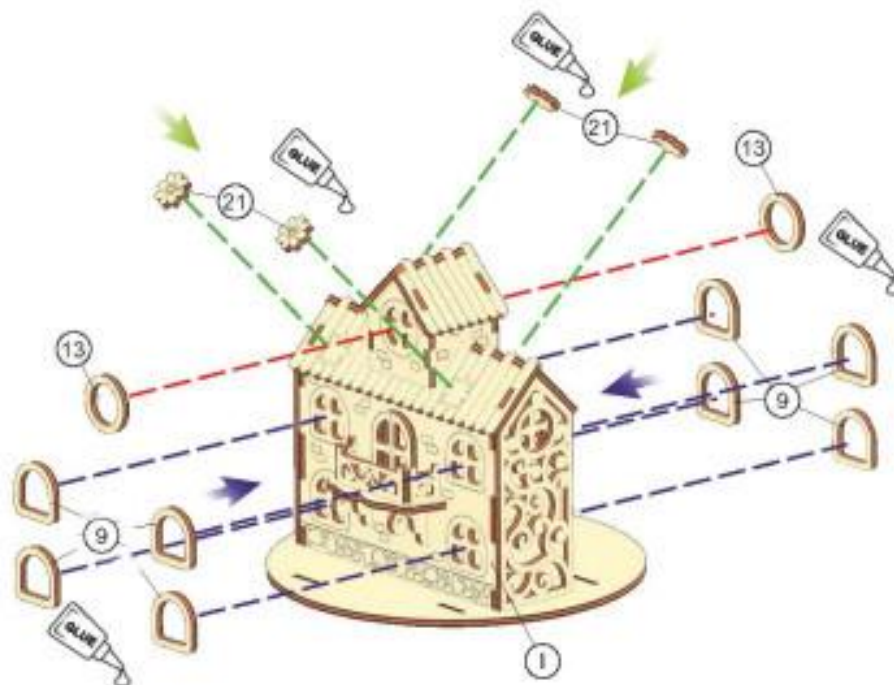
Glue part 22 to the side of the house as shown above. Use the score lines as a guide. Attach assembly G to the side of the house as shown above. Attach the two parts labeled 8 on top of the house as shown above.



Gather the two parts labeled 4. Glue the parts on both ends of the house as shown above.



Gather the four parts labeled 21 and glue them to the roof of the house as shown above. Use the score lines as a guide. Gather the two parts labeled 13 and glue them to the top of the house using the score lines as a guide. Gather the eight parts labeled 9 and glue them on both sides of the house as shown above. Use the score lines as guides.





Attach the two parts labeled 12 as shown above, making sure the score lines face outward. Attach the two parts labeled 25 as shown above, making sure the score lines face outward.

